

Cobolt FIC-05

Mounting plate for laser-to-fiber coupling with beam access

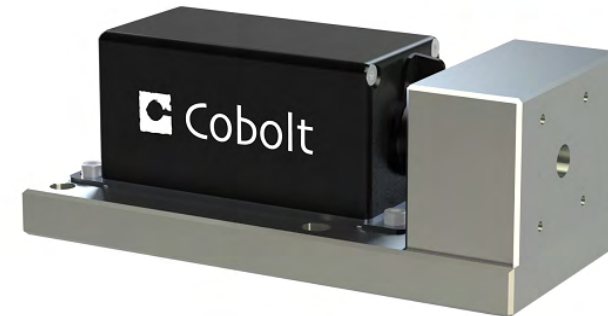


Illustration of possible configuration. Laser and fiber coupling option should be ordered separately.

Cobolt model number	FIC-05
Material	Aluminium
FIC-05 is suitable for use with all Cobolt lasers in the following model:	Cobolt o6-01 Series
Dimensions [mm] [inches]	140 x 65 X 51 5.5 x 2.5 X 2.0

Fiber coupling options are available for all Cobolt lasers. The option FIC-05 is recommended for the Cobolt o6-01 Series lasers. This option consists of a mounting plate for the laser and a coupling block to mount the fiber coupler onto. Fiber coupling options for either multimode fiber (MM) or single-mode polarization maintaining (SM/PM) fiber can be ordered separately. The FIC-05 is designed to be bolted to a standard metric or imperial optical table.

